

| Destination:

The BO - Site Base is the element of m-serwis. It is meant to manage the information about elements of technical infrastructure of the organisation.

| Application:

Maintenance of sites and devices in such branches as:

- + telecommunication;
- + power engineering;
- + industry.

| Basic functions:

- + implementation and edition of elements,
- + implementation and edition of properties of elements,
- + templates of types of elements,
- + dictionaries of types and subtypes of elements,
- + dictionaries of producers and suppliers,
- + site modification history,
- + element modification history,
- + multiplication of elements,
- + elements toolbox,
- + advanced browsing of sites,
- + projecting the reports.

possible to create a set of tabular data for each type of elements. It allows detailed description of elements of the infrastructure.

In the BO - Site Base it is possible to define:

- + zones,
- + locations,
- + sites,
- + warehouses.

The elements are placed in the sites or in the warehouses. It is possible to create a tree structure in order to map the correlations of particular component parts of sites or devices.

The application enables various functions enabling efficient implementation and management of information i.e. templates of elements, group addition of elements, multiplication of elements.

| Users:

The BO - Site Base is equipped with the configurable access of users to individual functions of the program. The authorities are granted by the System Administrator in the Administration module.

| Benefits:

- + using the application to describe discretionary types of devices,
- + quick access to key information regarding the sites,
- + site documentation,
- + history of modifications of the station, history of measurements,

| Possible extensions:

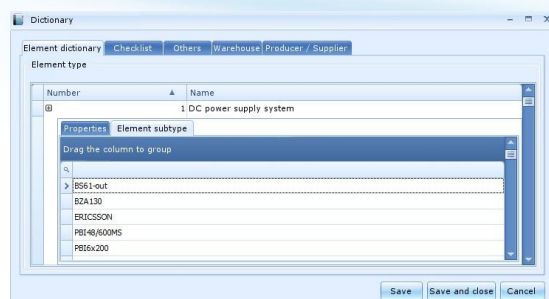
The BO - Site Base can be extended with the TIIS site. Using it makes it is possible to present the data additionally on the WWW site. It is possible to use the full functionality of the m-serwis by using MZ – Tasks Module and MS – Service Module.

| Options:

- + TIIS.

| Description:

The BO - Site Base is responsible for accounting of administration data of the technical infrastructure. It is equipped with the system of dictionaries enabling to define discretionary types and subtypes of devices and properties of elements.



Each element has got its basic data and additional properties configured by the user. It is additionally

