

| Destination:

MS - Service Module is an element of m-serwis. It is meant to execute the tasks ordered in MZ - Tasks Module.

| Application:

Maintenance of sites and devices in such branches as:
 + telecommunication;
 + power engineering;
 + industry.

| Basic functions:

- + synchronising the tasks with central base,
- + undertaking and returning the tasks,
- + execution of the tasks in accordance with assigned surveys,

The tasks in MS - Service Module are presented in the shape of operation schedule or list of tasks.

Each serviceman has the information about sites, where the tasks are executed. He has also got the access to the history of tasks executed by him.

MS - Service Module is equipped with local database, what enables off-line operation. Tasks can be executed at the user's computer during the works in the site and the access to the network is not needed. Return of task can take place after its execution.

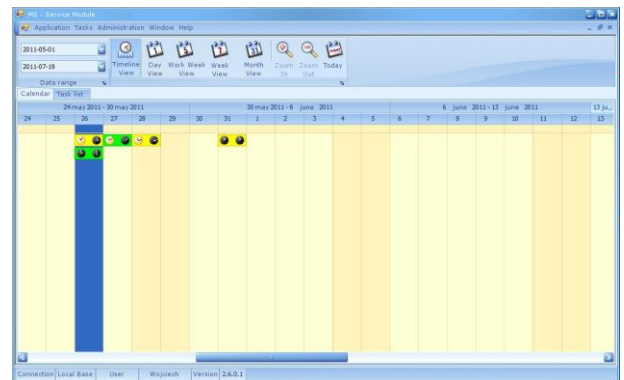
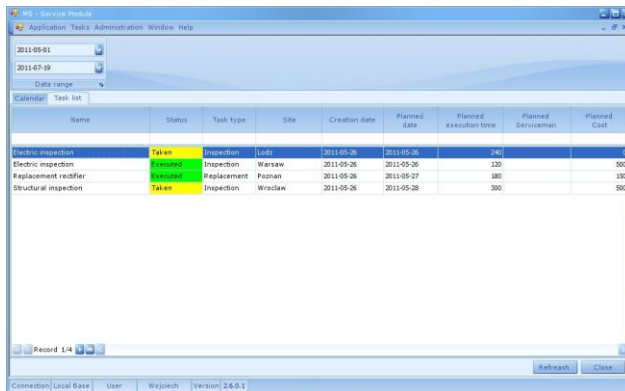
There is a possibility of adding the attachments to the tasks i.e. photos.

| Users:

Authorities of the users are given by the Administrator of the System in Administration module. Each user has an access only to the tasks executed by him.

| Benefits:

- + complete history of executed tasks for the sites,
- + statistics of executed tasks,
- + electronic circulation of measurement protocols,
- + quick access to data from the inspections,



| Description:

MS – Service Module is the m-serwis module meant for reception, execution and return of tasks ordered by the user of MZ - Tasks Module application. After reception of the order it is possible to undertake and execute it or refuse it. There are the surveys ordered by the operator visible in the task. During filling the protocol it is possible to use only the answers defined during construction of the survey template.

