

Destination:

m-serwis is the system supporting maintenance of technical infrastructure of the organisation. It is meant for any objects having distributed network of sites and devices.

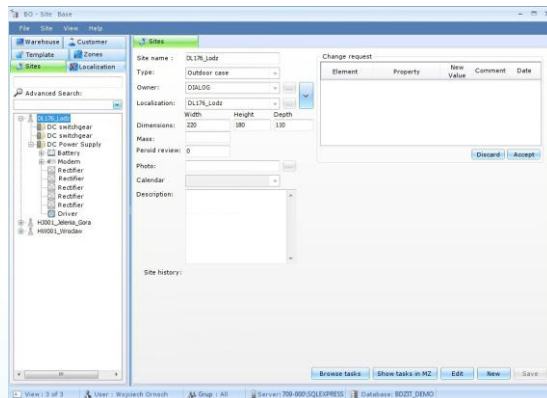
Application:

Maintenance of sites and devices in such branches as:

- + telecommunication;
- + power engineering;
- + industry.

BO - Site Base:

BO - Site Base is the Technical Infrastructure Management module responsible for accounting administration data of technical infrastructure. It is equipped with advanced configuration panel which enables to define discretionary sorts, types and properties of elements.



In the BO - Site Base it is possible to define:

- + zones,
- + locations,
- + sites,
- + warehouses.

The elements are placed in sites or in warehouses. It is possible to create a tree structure in order to map the correlations among particular component parts of sites or devices.

BO - Site Base basic functions:

- + implementation and edition of elements,
- + implementation and edition of properties of elements,
- + templates of types of elements,
- + dictionaries of types and subtypes of elements,
- + dictionaries of producers and suppliers,
- + history of modifications of sites,
- + history of modifications of the element,
- + multiplication of elements,
- + toolbox of elements,
- + advanced browsing of sites,
- + projecting reports.

MZ- Tasks Module:

The MZ - Tasks Module application is responsible for management of tasks and reports for the sites. The system uses the idea of developed electronic surveys, which can describe any element or process. Templates of questions and surveys are configured by the administrator of the system.

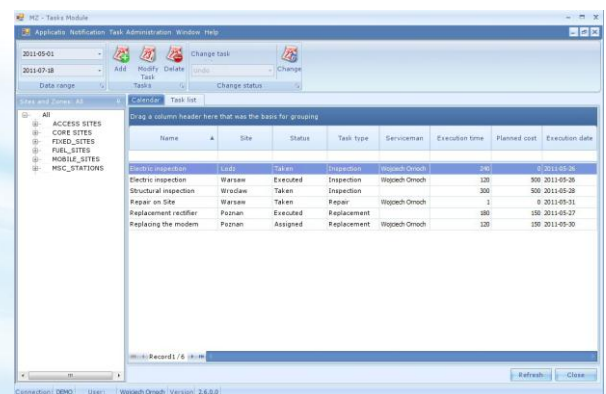
The forms can be prepared in a way reflecting the protocols of inspections. The questions may be of the following type:

- + choice - with list of answers to choose,
- + option - with 'yes' or 'no' answer,
- + readout - value of measurement with defined maximal and minimal value,
- + text - answer entered in text form,
- + table - answers are put into the defined table
- + date and time - defining the date and time

The servicemen and service crews performing the services of inspections and repairs are defined in the system. After creating the task and associating it to the contractor, it is transmitted to the serviceman's computer by means of separated network or Internet. The task is performed by the contractor. After returning it it's possible to view the answers given by the user. Each task is registered and remembered in the system. The tasks can be presented in a form of list of task or as a calendar, which allows planning of works for particular workers.

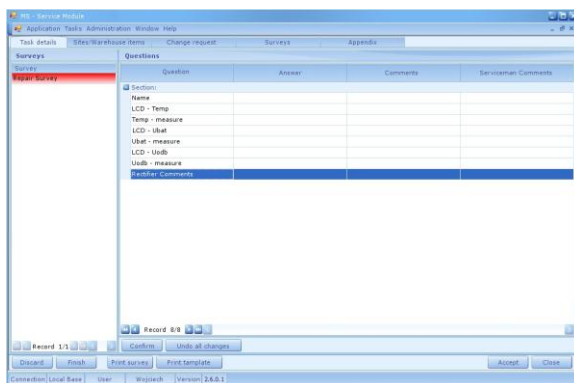
MZ - Tasks Module basic functions:

- + associating the tasks to the sites for the serviceman or service crews,
- + sending the tasks to the users,
- + defining questions,
- + defining surveys,
- + list of tasks,
- + grouping and filtering the data,

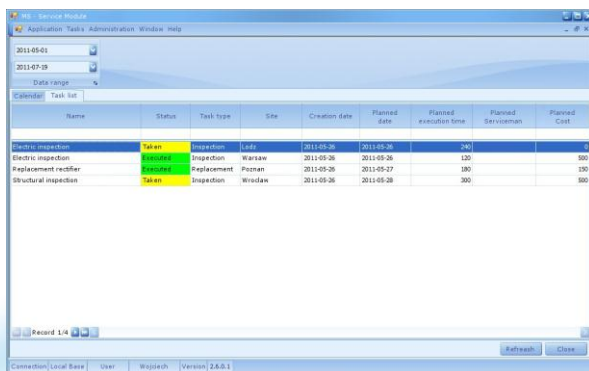


| MS – Service Module:

Infrastructure management module meant for reception, execution and return of tasks ordered by the user of MZ – Tasks Module application. After reception of the order it is possible to undertake and execute it or refuse it. There are the surveys ordered by the operator visible in the task. During filling the protocol it is possible to use only the answers defined during construction of the survey template. After entering all the answers it is returned to the central base.



The tasks in MS – Service Module are presented in the shape of operation schedule or list of tasks. Each serviceman has the information about sites, where the tasks are executed. He has also got the access to the history of tasks executed by him. MS – Service Module is equipped with local database, what enables off-line operation. Tasks can be executed at the user's computer during the works in the site and the access to the network is not needed. Return of tasks can take place after its execution. There is a possibility of adding the attachments to the tasks i.e. photos.



| MS – Service Module basic functions:

- + synchronising the tasks with central base,
- + undertaking and returning the tasks,
- + execution of tasks in accordance with assigned surveys,

| m-serwis - Users:

The m-serwis has a configurable access of users to particular functions of the program. The authorities are given by the Administrator of the System in the Administration module.

| m-serwis - Benefits:

- Using m-serwis system enables the following benefits:
- + quick access to administration data of sites,
 - + standardisation of procedures and tasks performed for the sites,
 - + electronic circulation of inspection documents,
 - + quick access and complete history of tasks performed in the sites,
 - + reduction of costs of inspections by using the system by the Integrator of tasks.

| m-serwis – Possible extensions:

m-serwis is a stand-alone application. Additional installation of TIIS site supplies the system with web functions.

| m-serwis - Options:

- + TIIS;