



*The purpose of the system is to ensure an appropriate level of security for people, property, data and the proper functioning of the protected facility.*

### SYSTEM PURPOSE

The WinCN 5 System is designed for remote monitoring

- Technical infrastructure (e.g. power systems, gen-sets, switching stations, air conditioning)
- Environmental conditions
- Access control
- Burglary and assault signaling
- Video monitoring systems
- Fire alarm

### APPLICATION

Control, alarm and signaling systems in areas such as:

- telecommunication
- power engineering
- industry
- IT.

### KEY FEATURES

- ✓ continuous supervision of devices operation
- ✓ automatic sending of information about alarm states to the Supervisory Center
- ✓ configurable auto-read sessions
- ✓ communication with sites using different transmission media
- ✓ graphs of measured parameters
- ✓ a large number of supervised sites - over 10,000
- ✓ handling a large number of events thanks to the distribut-

ed system architecture

- ✓ possibility of cooperation with MS SQL databases
- ✓ the possibility of mapping any structure of the facility and devices
- ✓ analysis of historical events
- ✓ data export to files in popular formats for the purpose of analysing and creating advanced reports
- ✓ grouping objects by location, location into areas and hierarchical grouping of areas
- ✓ the ability to create report templates and generate reports based on tabular data
- ✓ possibility of presenting several data series on one chart
- ✓ interface adapted to the user's needs
- ✓ advanced possibilities of presenting, sorting, grouping, hiding and filtering data
- ✓ configurable levels of permissions for the Area, Owner and Sites
- ✓ Continuous supervision of the condition of Sites and automatic sending of information about alarm states
- ✓ Possibility to supervise any structure of the facility and the devices operating in it
- ✓ Graphical representation of supervised areas thanks to scalable maps and building plans
- ✓ the ability to define virtual signals - calculated in accordance with a defined rule based on the value of real signals
- ✓ view from cameras (CCTV) and analysis of recordings from cameras
- ✓ verification of the weather forecast
- ✓ Possibility to define alarm thresholds for measuring signals
- ✓ Ability to define correlation between device alarms
- ✓ The function of receiving alarms by the system operator
- ✓ Advanced event system that allows operators to monitor event handling
- ✓ Suggestions for actions for the operator
- ✓ Control from the mobile application



## DESCRIPTION

Many years of experience gained from the WinCN system resulted in the creation of a completely new version of the WinCN 5 system. The application was implemented using the .NET software. It includes all functionalities available so far in earlier versions of WinCN. In the new version, a lot of emphasis was placed on the remote process of intruder alarm (SSWIN), access control (KD), fire alarm system (SSP), closed-circuit television (CCTV), perimeter protection of Technical Infrastructure Monitoring (MIT).

The main task of the WinCN 5 system is receiving reports about failures or reports containing information about their condition and operating conditions from the supervised facilities. From the Supervision Center it is also possible to establish a connection manually with any object and read the current operating parameters of the devices, change their configuration and control their operation. Moreover, data can be registered cyclically according to configurable scenarios.

The WinCN 5 software is user friendly. The system records and archives all data related to the supervised facilities, which are collected in the history of events and measurements. Configuration data of individual objects and each registered state can be documented in the form of printouts or graphs. Video monitoring data is presented both in real time and with the possibility of viewing the historical record.

## WINCN WEB:

The operating parameters of devices and alarms can be additionally presented on the website, which is available to users registered in the system. The data from the site is presented via the WinCN Web application.

## COMMUNICATION:

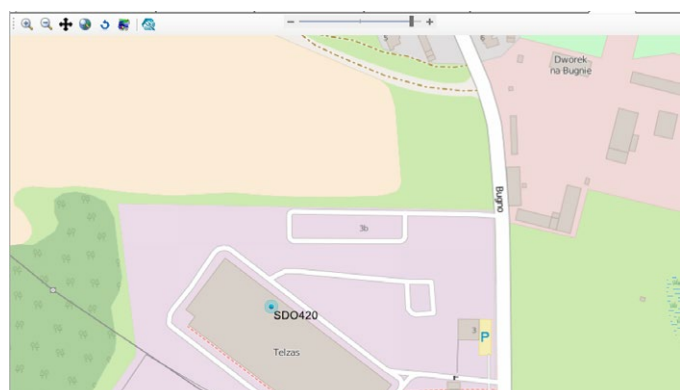
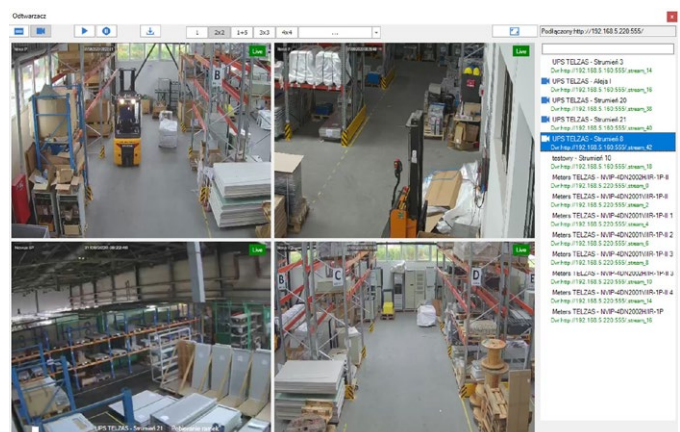
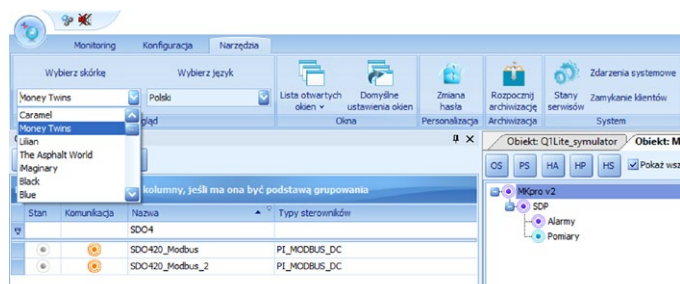
The WinCN 5 software communicates with supervised devices using:

- PSTN / ISDN link
- networks with the TCP / IP protocol
- GSM cellular network using GPRS transmission
- RS 232/485 - local transmission

## SYSTEM COMPONENTS:

The WinCN 5 system consists of the following applications:

- WinCN 5 Server (terminal application)
- WinCN 5 OMK (communication module)
- WinCN 5 Client (desktop application)
- WinCN Web (web application)



*Our experts will help to properly select and configure all elements of the power system and to integrate this product with other solutions.*

### COMMON QUESTIONS

- selection of the battery
- selection of the battery & loads protections
- selection of cable cross-section

### RELATED PRODUCTS AND SERVICES

- indoor cabinets / racks
- outdoor cabinets
- batteries
- installation service
- remote monitoring
- extended warranty